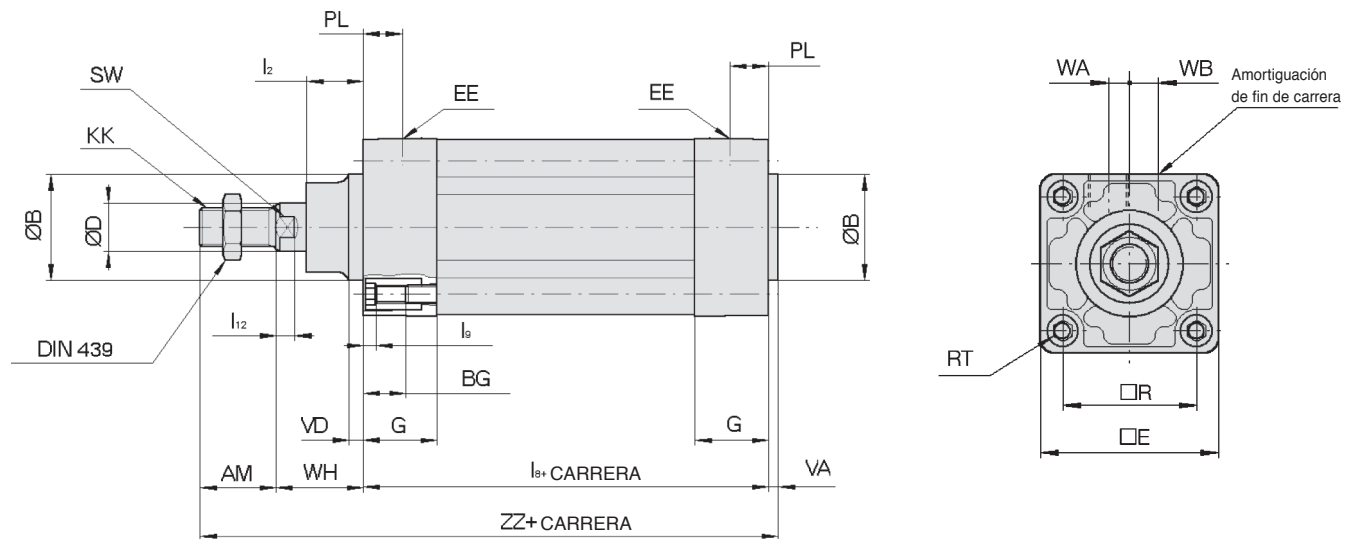
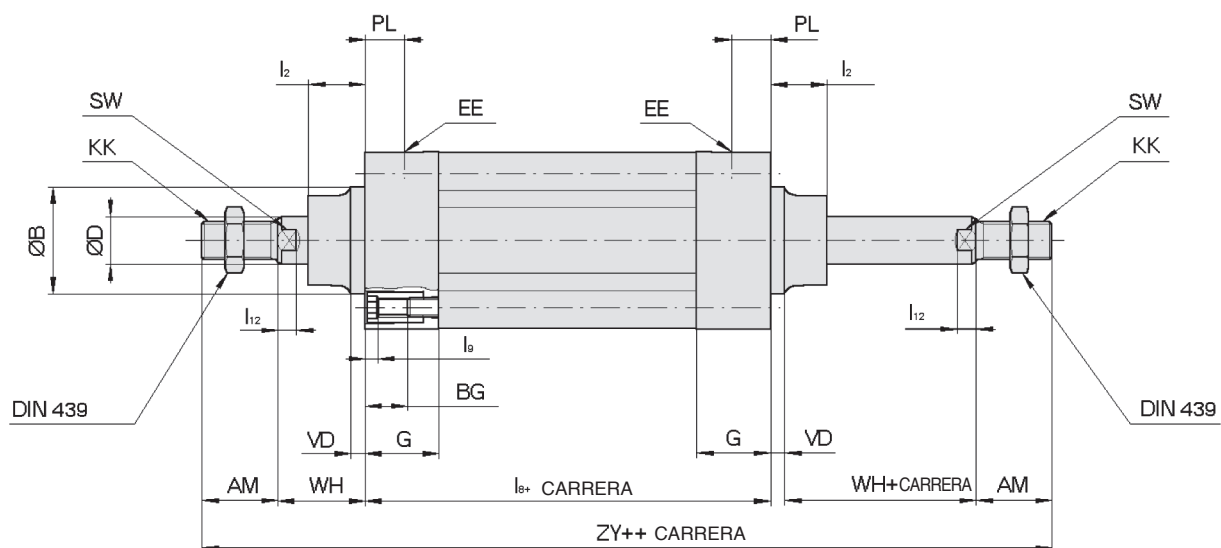


## Sin fijación de montaje

### CP95SB0-Carrera



### CP95SB0-Carrera W



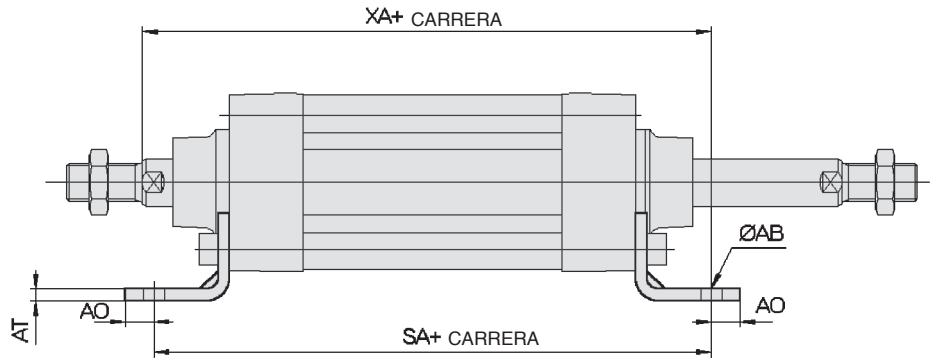
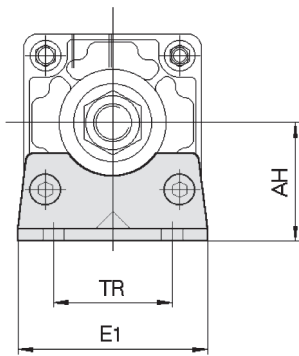
Ø	AM	ØB	ØD	EE	PL	RT	l <sub>12</sub>	KK	SW	G	BG	l <sub>8</sub>	VD	VA	WA	WB	WH	ZZ	ZY	□E	□R	l <sub>2</sub>	l <sub>9</sub>
32	22	30	12	G1/8	13	M6	6	M10x1.25	10	27	16	94	4	4	4	6.5	26	146	190	46	32.5	15	4
40	24	35	16	G1/4	14	M6	6.5	M12x1.25	13	27	16	105	4	4	4	9	30	163	213	52	38	17	4
50	32	40	20	G1/4	15.5	M8	8	M16x1.5	16	31.5	16	106	6	4	5	10.5	37	179	244	65	46.5	24	5
63	32	45	20	G3/8	16.5	M8	8	M16x1.5	16	31.5	16	121	6	4	9	12	37	194	259	75	56.5	24	5
80	40	45	25	G3/8	19	M10	10	M20x1.5	21	38	16	128	8	4	11.5	14	46	218	300	95	72	30	5
100	40	55	30	G1/2	19	M10	10	M20x1.5	21	38	16		8	4	17	15	51	233	320	114	89	32	5

# Serie CP95

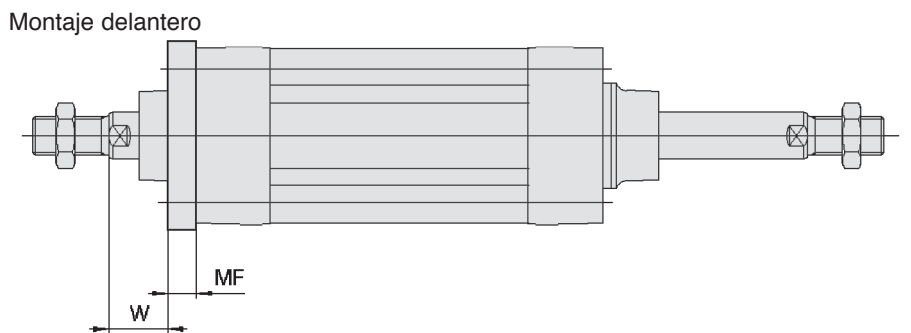
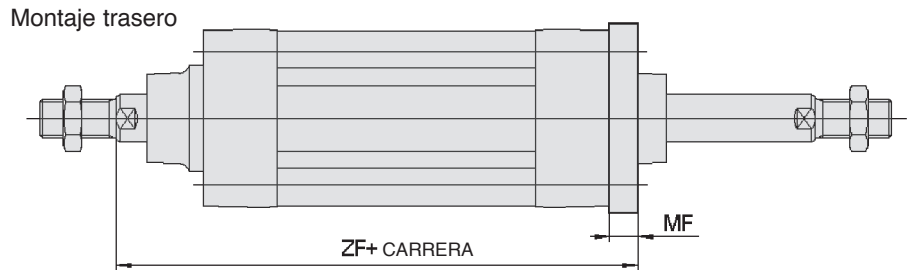
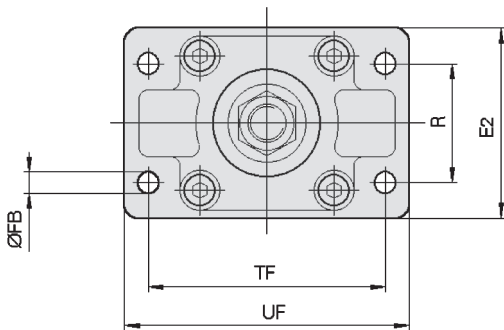
## Dimensiones – Accesorios de montaje L, F, C y D

[mm]

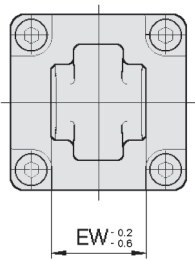
### Tipo de montaje L



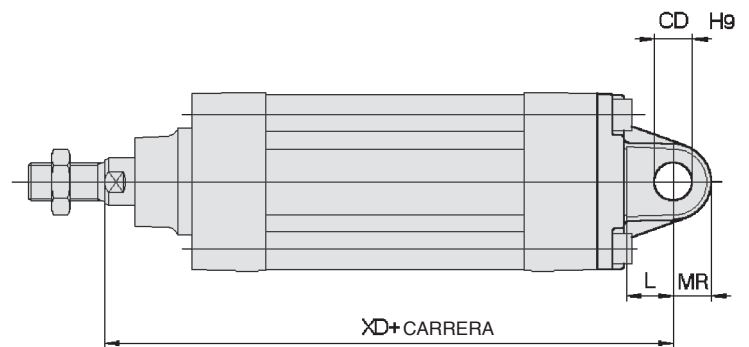
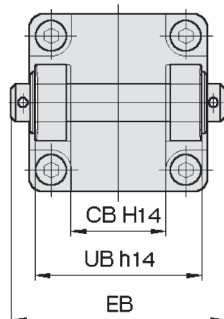
### Tipo de montaje F



### Tipo de montaje C



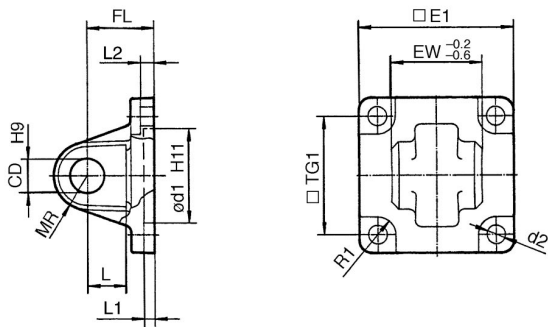
### Tipo de montaje D



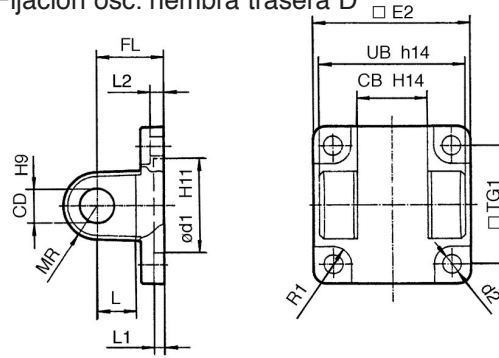
Ø Bore	E1	R	W	MF	ZF	ØFB	CD	EB	L	XD	UB	CB	EW	MR	TR	AO	AT	XA	SA	AH	ØAB	TF	UF	E2
32	48	32	16	10	130	7	10	65	12	142	45	26	26	9.5	32	10	4	144	142	32	7	64	79	50
40	55	36	20	10	145	9	12	75	15	160	52	28	28	12	36	11	4	163	161	36	9	72	90	55
50	68	45	25	12	155	9	12	80	15	170	60	32	32	12	45	12	5	175	170	45	9	90	110	70
63	80	50	25	12	170	9	16	90	20	190	70	40	40	16	50	12	5	190	185	50	9	100	120	80
80	100	63	30	16	190	12	16	110	20	210	90	50	50	16	63	14	6	215	210	63	12	126	153	100
100	120	75	35	16	205	14	20	140	25	230	110	60	60	20	75	16	6	230	220	71	14	150	178	120

## Accesorios

### Fijación osc. macho trasera C

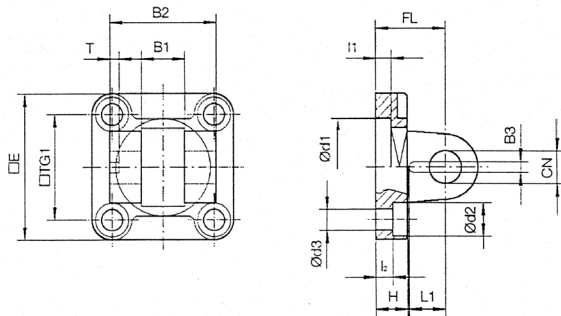


### Fijación osc. hembra trasera D



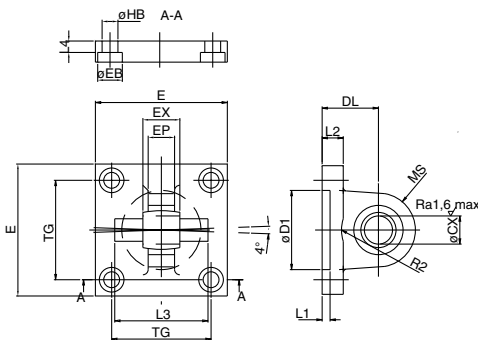
Diámetro (mm)	□E1	EW	□TG1	FL	L1	L	L2	ød1	CD	MR	d2	R1	□E2	UB	CB
32	45	26	32.5	22	5	12	5.5	30	10	9.5	6.6	6.5	48	45	26
40	51	28	38	25	5	15	5.5	35	12	12	6.6	6.5	56	52	28
50	64	32	46.5	27	5	15	6.5	40	12	12	9	8.5	64	60	32
63	74	40	56.5	32	5	20	6.5	45	16	16	9	8.5	75	70	40
80	94	50	72	36	5	20	10	45	16	16	11	11	95	90	50
100	113	60	89	41	5	25	10	55	20	20	11	12	115	110	60

### Fijación osc. macho trasera DS



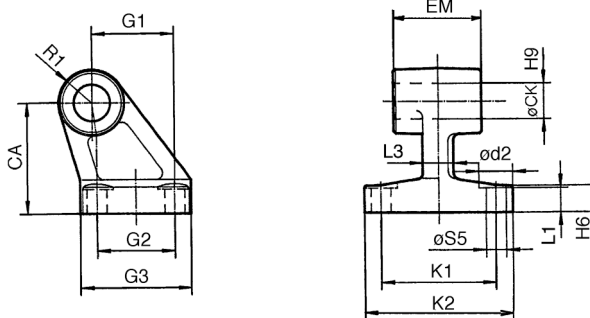
Diámetro (mm)	□E	B1	B2	B3	□TG1	T	L1	L3	I1	I2	FL	H	Ød1	Ød2	Ød3	CN	XD
32	45	14	34	3.3	32.5	3	11.5	41	5	5.5	22	10	30	10.5	6.6	10	142
40	55	16	40	4.3	38	4	12	48	5	5.5	25	10	35	11	6.6	12	160
50	65	21	45	4.3	46.5	4	14	54	5	6.5	27	10	40	15	9	16	170
63	75	21	51	4.3	56.5	4	14	60	5	6.5	32	12	45	15	9	16	190
80	95	25	65	4.3	72	4	16	75	5	10	36	16	45	18	11	20	210
100	115	25	75	6.3	89	4	16	85	5	10	41	16	55	18	11	20	230

### Fijación osc. macho trasera CS



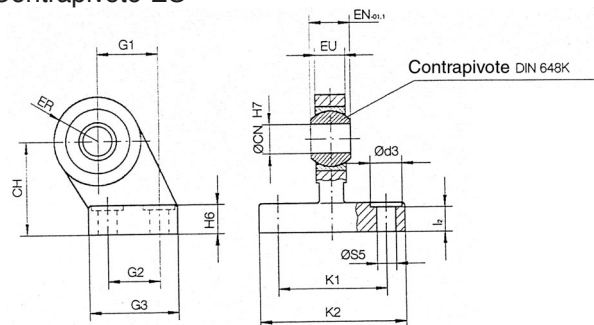
Ref.	Diámetro (mm)	E	TG	EX	DL	L1	L2	MS	L3	EB	HB	R2	CX	D1	L4	EP
CS5032	32	48	32.5	14	22	5	10	16	36	11	6.6	12.5	10	30	5.5	10
CS5040	40	56	38	16	25	5	10	16	42	11	6.6	14.5	12	35	5.5	11.5
CS5050	50	64	46.5	21	27	5	10	20	48	15	9	19.5	16	40	6.5	14.5
CS5063	63	75	56.5	21	32	5	12	22	55	15	9	19.5	16	45	6.5	14.5
CS5080	80	95	72	25	36	5	14	26	70	18	11	24.5	20	45	10	17.5
CS5100	100	115	89	25	41	5	16	26	80	18	11	24.5	20	55	10	17.5

### Contrapivote E



Diámetro (mm)	ød2	øCK	øS5	K1	K2	L3	G1	L1	G2	EM	G3	CA	H6	R1
32	11	10	6.6	38	51	10	21	7	18	26	31	32	8	10
40	11	12	6.6	41	54	10	24	9	22	28	35	36	10	11
50	15	12	9	50	65	12	33	11	30	32	45	45	12	12
63	15	16	9	52	67	14	37	11	35	40	50	50	12	15
80	18	16	11	66	86	18	47	12.5	40	50	60	63	14	15
100	18	20	11	76	96	20	55	13.5	50	60	70	71	15	19

### Contrapivote ES



Diámetro (mm)	Ød3	OCN	ØS5	K1	K2	I2	G1	G2	G3	EN	EU	CH	H6	ER
32	11	10	6.6	38	51	8.5	21	18	31	14	10.5	32	10	15
40	11	12	6.6	41	54	8.5	24	22	35	16	12	36	10	18
50	15	16	9	50	65	10.5	33	30	45	21	15	45	12	20
63	15	16	9	52	67	10.5	37	35	50	21	15	50	12	23
80	18	20	11	66	86	11.5	47	40	60	25	18	63	14	27
100	18	20	11	76	96	12.5	55	50	70	25	18	71	15	30

